



Addendum

RFP TITLE: Chilliwack River Valley Slope Hazard Public Safety & Risk Assessment

RFP NUMBER: 24011

DATE ISSUED: September 6, 2024

The following amendments are made to Request for Proposals No. 24011 for the Chilliwack River Valley Slope Hazard Public Safety & Risk Assessment:

1. Closing Date

Section C.1 of the RFP is amended such that the closing date for submission of proposals is extended to **3 PM PDT on Wednesday October 16, 2024.**

2. Delivery of Proposals

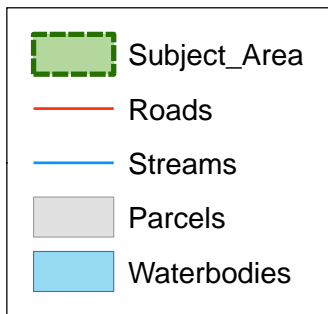
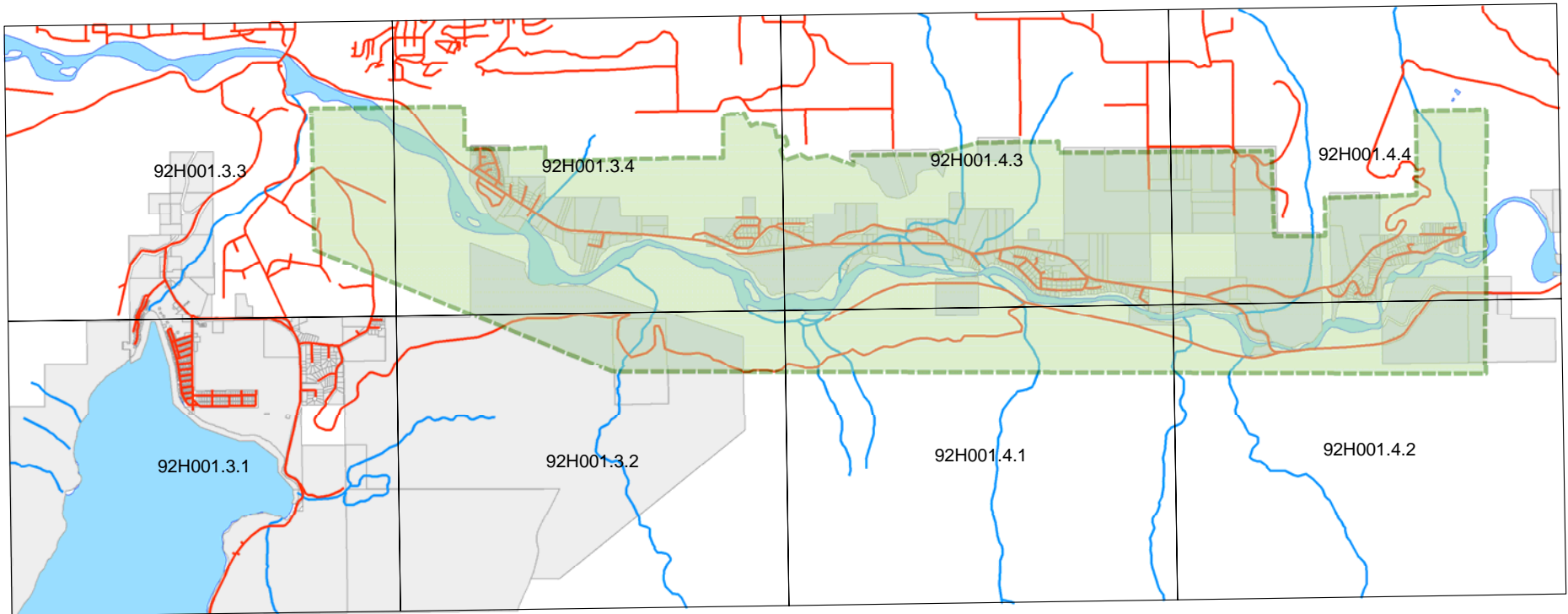
Section C.2 of the RFP is amended such that proponents are requested to deliver proposals by email to Graham Daneluz, Director of Planning & Development, by email at gdaneluz@fvrld.ca.

3. Key Documents

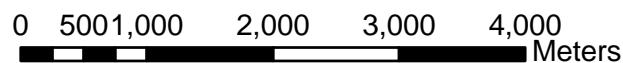
Section B.5 of the RFP is supplemented to specify that FVRD currently possesses LiDAR data sets dated 2008, 2016 and 2021 which cover portions of the Chilliwack River Valley. The area of coverage of each data set is shown in the attached.

END

FVRD Chilliwack River Valley LiDAR Project 2008



Scale: 1:60,000



Created for: Silvatech
Created by: Fraser Valley Regional District
Created on: April 17, 2008

2016 LiDAR Coverage

Chilliwack River Valley

EASTERN HILLSIDES

RYDER LAKE

ROMONTORY

aker Trails

Chilliwack River

Slesse Park

Google Earth

Image © 2024 Airbus



5 km

2021 LiDAR Coverage

